

#whsterilization
f @ in ▶
video.wh.com

Now at
your dealer
or wh.com



+ More Incredible!

Lexa PLUS sterilizer

lexa PLUS

+ More Incredible with Lexa PLUS

The Lexa Plus sterilizer is even more incredible! The device offers even more capacity, energy-saving fast cycles and automatic water filling to increase efficiency. Its connectivity and traceability options make the sterilizer ready for any custom needs now or in the future. Easy navigation with the intuitive touch screen display guarantees complete control of the workflow, saving time and offering full protection for you and your patients.



Interrupting the chain of infection
for peace of mind on reprocessing and infection prevention.

- › Class B, pre-vacuum sterilizer
- › Versatile cycle program options for all types of loads
- › Closed-door drying with HEPA filter
- › Single-use distilled water management, ensuring fresh water for every cycle

Eco Dry + technology

Fast cycles and energy saving

Functionality

Convenient, automatic water filling saves time

Capacity

18 lbs. maximum load and optimized rack holds 5 trays

Traceability

Protection at a new level with EliTrace

“Sterilization actively **minimizes** the risk of **infection!** Because it's all about the safety of your patients, your employees and yourself.”



+ More Technology thanks to Eco Dry +

Offering even more technology with the advanced patented Eco Dry + which adapts the drying time to the mass of the load. This increases efficiency by reducing cycle times, increases the life span of your instruments and optimizes energy consumption.



Only 20 minutes for unwrapped loads and only 8 minutes more for wrapped loads.

Time saving

Processes and perfectly dries an approximate 4.5 LB WRAPPED LOAD IN LESS THAN 40 MINUTES.

Extends service life

Automatic adjustment of the drying time depending on the load reduces heat exposure time. This extends the service life of your instruments.

Energy saving

Optimizing the drying time means less energy consumption. This makes Lexa Plus the »green solution«.

Reprocessing in less than 22 minutes!

60 sec



Wipe disinfection in 1 minute

Disinfect your instruments by wiping them down before cleaning and maintenance.

10-second maintenance

The Assistina Twin reduces the maintenance process to a record time of 10 seconds.



10 sec

20 min



Sterilization in 20 minutes

Instruments can be removed from the sterilizer ready for use after only 20 minutes.



+ More Functionality thanks to advanced features

Thanks to the automatic water filling feature, Lexa Plus offers even more functionality and efficiency in everyday dental infection control. In addition, more advanced connectivity capabilities allow for remote monitoring and advanced service support.

Advanced connectivity

- › The ioDent® system offers intelligent dental solutions and enables an advanced service support.
- › The W&H Steri App allows controlling and remote monitoring up to 4 sterilizers. In addition, cycle history back-up saved on your smartphone ensures extra safety.



Water management system

- › An automatic water filling valve allows you to connect a demineralized system for optimal efficiency. Manual filling and draining are no longer necessary.
- › Manual filling is also possible using the integrated funnel on the front of the device.

+ More Capacity

thanks to its 7.4 gallon chamber

With its 7.4 gallon chamber, Lexa Plus is able to reprocess up to 16.5 pounds of wrapped and 18 pounds of unwrapped instruments and is extremely flexible thanks to its 5-tray rack.



Higher efficiency due to larger capacity ...

Lexa Plus comes with 5 large trays along with a unique rack providing larger loading surface and more loading options.

... and less cycle time.

Lexa Plus offers versatile program options for all types of loads in order to reduce overall cycle duration.

+ More Traceability

thanks to better protection with EliTrace

A high standard of hygiene is paramount at every dental practice. With the new Lexa Plus this standard is now being further optimized. EliTrace is the advanced documentation system that offers for the first time full traceability, down to the single instrument or set. The result: a high level of safety for both practices and patients.

Full traceability without extra software or computers: with **EliTrace**.



Enhanced traceability

- › The documentation is automatically saved via a high-capacity USB stick.
- › The optional barcode label printer and cycle report printer provide additional support on traceability thanks to the opportunity to link cycle, sterilization package and patient.
- › Ethernet (LAN) and optional WiFi connections offer the opportunity to download cycle reports directly on any PC or smart device.

Easy to use thanks to greater efficiency

The Lexa Plus is built to offer more of all that counts in everyday dental infection control. Its color touch screen display offers an intuitive menu structure with a wide range of options to make your daily work easier, faster, and more efficient. The large chamber capacity, short cycle times and excellent load drying offer additional efficiencies as well as more flexibility due to the user-friendly tray and exclusive rack design.



Intuitive navigation

The intelligent menu structure of the new Lexa Plus sterilizer ensures extraordinarily high operating comfort. You can navigate to the sterilization programs quickly and easily using the large 4.3" color display.



Available Accessories

Multidem

Multidem supplies demineralized water for steam generation and can be used for many conventional sterilizers and processing units. As a result, it ensures consistent and optimized performance, thereby extending the service life of your sterilizer and instruments.

Osmo

Osmo is the best water treatment device to supply several sterilizers with high-quality demineralized water at the same time. It automatically fills and drains up to 5 sterilizers simultaneously and is able to produce up to 8 gallons of water per hour.



1 Remote Wi-Fi kit

Allows the sterilizer to be wirelessly connected to a clinic's network.

2 Sprint

Print out cycle protocols on thermal paper with a 10-year paper warranty.

3 W&H Bowie & Dick test

A daily test that can be performed on your pre-vacuum sterilizers. The W&H branded Bowie-Dick test allows for a more enhanced traceability by linking the sterilization cycle with the test sheet.

4 Barcode scanner

The scanner enables you to scan labels into patient records.

5 Barcode label printer

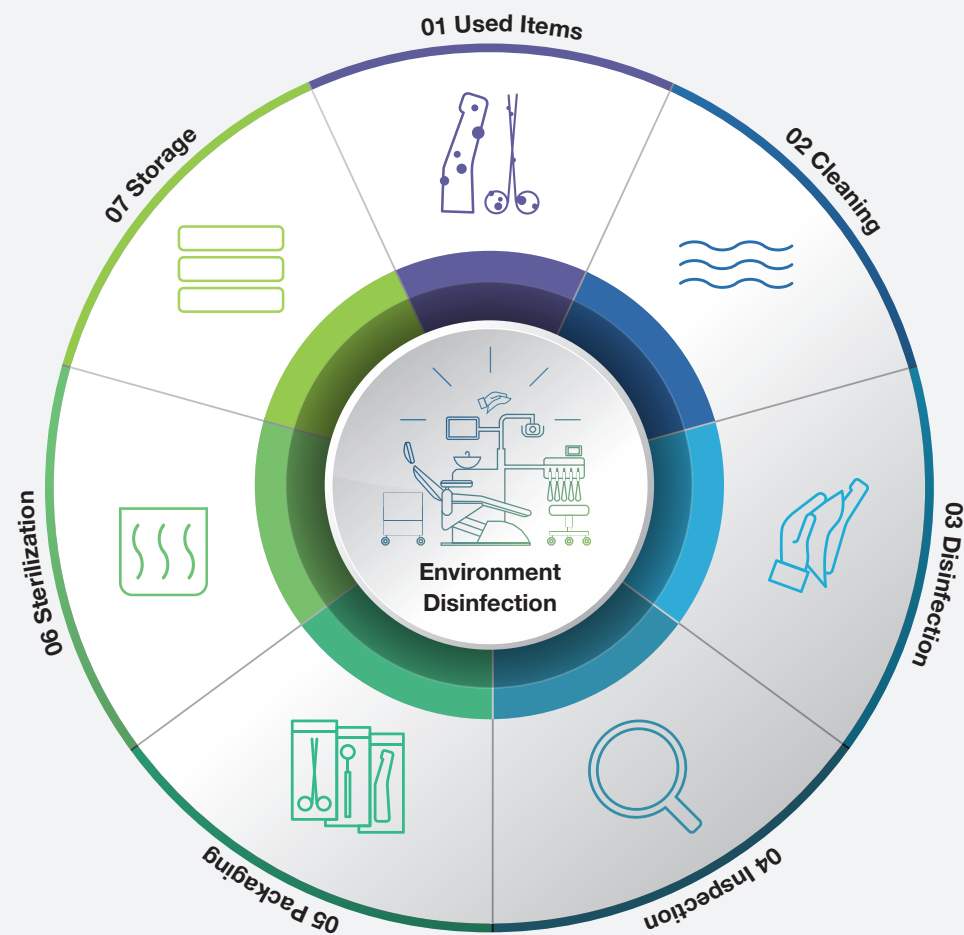
The label printer can be connected to the sterilizer for printing barcodes. In combination with the integrated data logger, it improves your traceability system. The label printer is a quick and easy tool for linking the sterilization cycle with patient records.

W&H AIMS Safety first!



Hygiene is extremely important in the dental practice. W&H AIMS is here to help: with a wide product portfolio, fundamental knowledge and all relevant information at a glance.

For your safety and the safety of your patients: aims.wh.com



Technical data

Lexa Plus Sterilization Programs

Sterilization cycles:	Wrapped		Low Temperature		Unwrapped	
Temperature:	270°F (132°C)		250°F (121°C)		270°F (132°C)	
Sterilization time: (minutes)	4 min		30 min		4 min	
	eco dry+	Typical load	eco dry+	Typical load	eco dry+	Typical load
Total cycle duration (minutes) including complete drying time:	Automatic from 28–62 min	39 min	Automatic from 68–107 min	85 min	Automatic from 20–40 min	24 min
Max. load:	14 lbs (6.3 kg) Pouched/unwrapped items on trays			18 lbs (8.1 kg) Unwrapped items		
	16.5 lbs (7.5 kg) Items in wrapped/unwrapped cassettes or in trays and wrapped/unwrapped cassettes					
	4.4 lbs (2.0 kg) Pouched/unwrapped Textile load on trays					

Sterilizer supplied with rack, 5 aluminum trays, drain hose, tray holder, 8 GB USB stick, door opening tool, factory test



Trade Name:	Lexa Plus
Type:	RIS-311
Chamber size:	7.4 gal (28 liters)
Power supply:	200–240 V AC; 50/60 Hz; 10 A single phase
Power consumption:	2.0–2.4 kW
Overall dimension (w x h x d):	19.3" x 17.9" x 24.4" (492 x 455 x 620 mm)
Weight (empty):	119 lbs (54 kg)
Main/Used water tanks:	1.27 gal/1.35 gal (4.8 liters/5.11 liters)
Working range:	5 to 15 cycles
Usable space in chamber (w x h x d): ⁽¹⁾	9" x 9" x 17.3" (230 x 230 x 439.4 mm)
Connection types:	5 USB ports, 1 Ethernet (LAN) port, automatic water filling kit

⁽¹⁾ Usable space is referred to standard rack configuration.

Lexa Plus sterilizers were designed, certified and validated with the most stringent directives and standards:

EN 13060	Small steam sterilizers	IEC 61326-1	Electromagnetic compatibility
ASME	Boiler and pressure vessel code	IEC 61010-1	Safety requirements
ANSI/AAMI ST55	Table-top steam sterilizers	IEC 61010-2-040	Safety specific requirements for steam sterilizers
N°2017/745	Medical Device Regulation	IEC 61770	Electric appliances connected to the water mains (avoidance of backsiphonage)
2014/68/EU	Pressure Equipment Directive	2012/19/EU	Waste Electrical and Electronic Equipment (WEEE)
CSA-C22.2 No 61010-1	Safety requirements for electrical equipment for measurement, control and laboratory use, general requirements	UL 61010-1	Safety requirements for electrical equipment for measurement, control and laboratory use, general requirements

⁽¹⁾ The sterilizer can be validated according to EN ISO 17665-1

It is all about **your demands**

For years W&H has been known as the pioneer in terms of sterilization. Our biggest aim is to develop innovative, reliable and fast sterilizers, that fit perfectly into each individual practice environment and workflow.



Manufacturer:

W&H Sterilization Srl.
Via Bolgara, 2
24060 Brusaporto (BG), **Italy**
t +39 035-66 63 000
f +39 035-50 96 988
office.sterilization@wh.com
wh.com

Distribution:

W&H Impex Inc.
6490 Hawthorne Drive
Windsor, Ontario, N8T 1J9
t +1 800 265 6277 Within USA/Canada
t +1 519 944 6739 Outside USA/Canada
f +1 519 974 6121
wh.com/na

Pictures are for illustrative purposes only. Additional equipment and accessories shown are not included as standard.

20548 AAE Rev. 002 / 19.06.2023
Subject to alterations