

#whdentalwerk



video.wh.com

Now at  
your dealer  
or [wh.com](http://wh.com)



# Assistina Twin with Quick Connect by W&H

## The adaptor system

**Quick and simple adaptor changes optimize your processes and increase efficiency in practice.**

You decide which adaptors you actually need.  
Equip your Assistina Twin according to your needs  
and only use the right adaptors suitable for you in  
the two chambers.



assistina<sup>TWIN</sup>



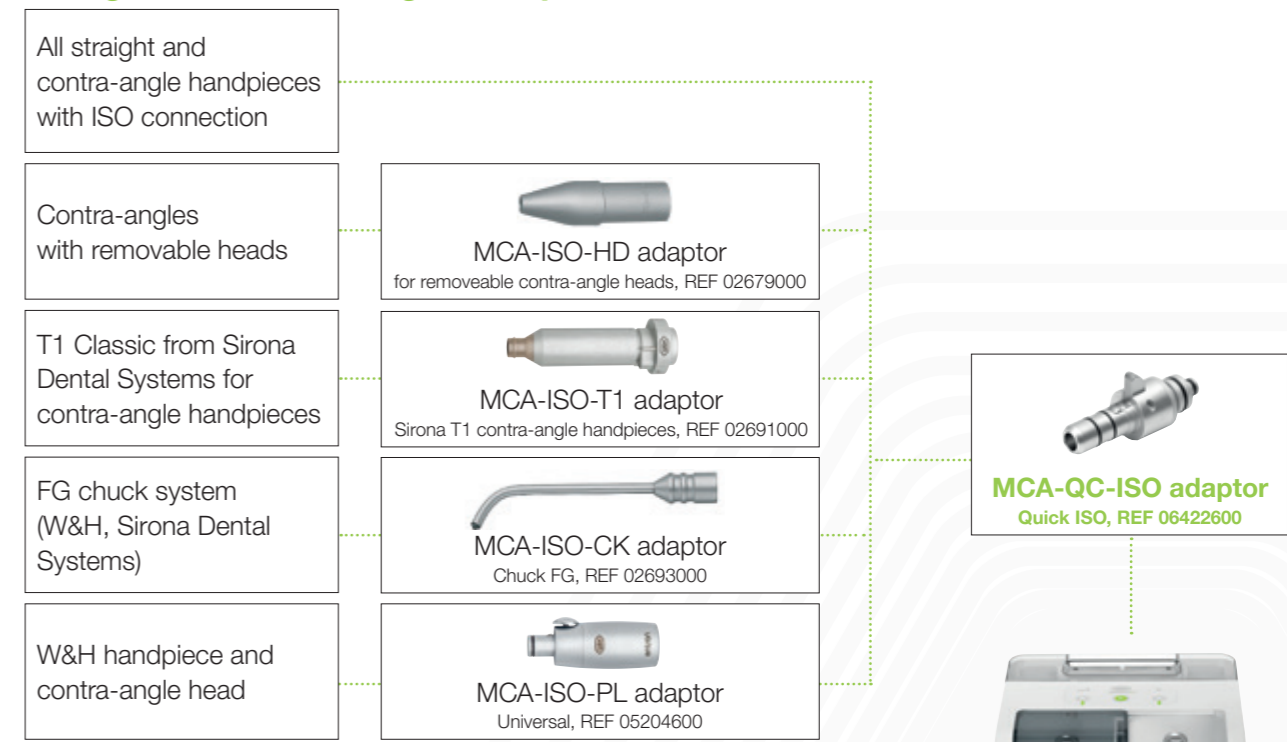


# System overview adaptor

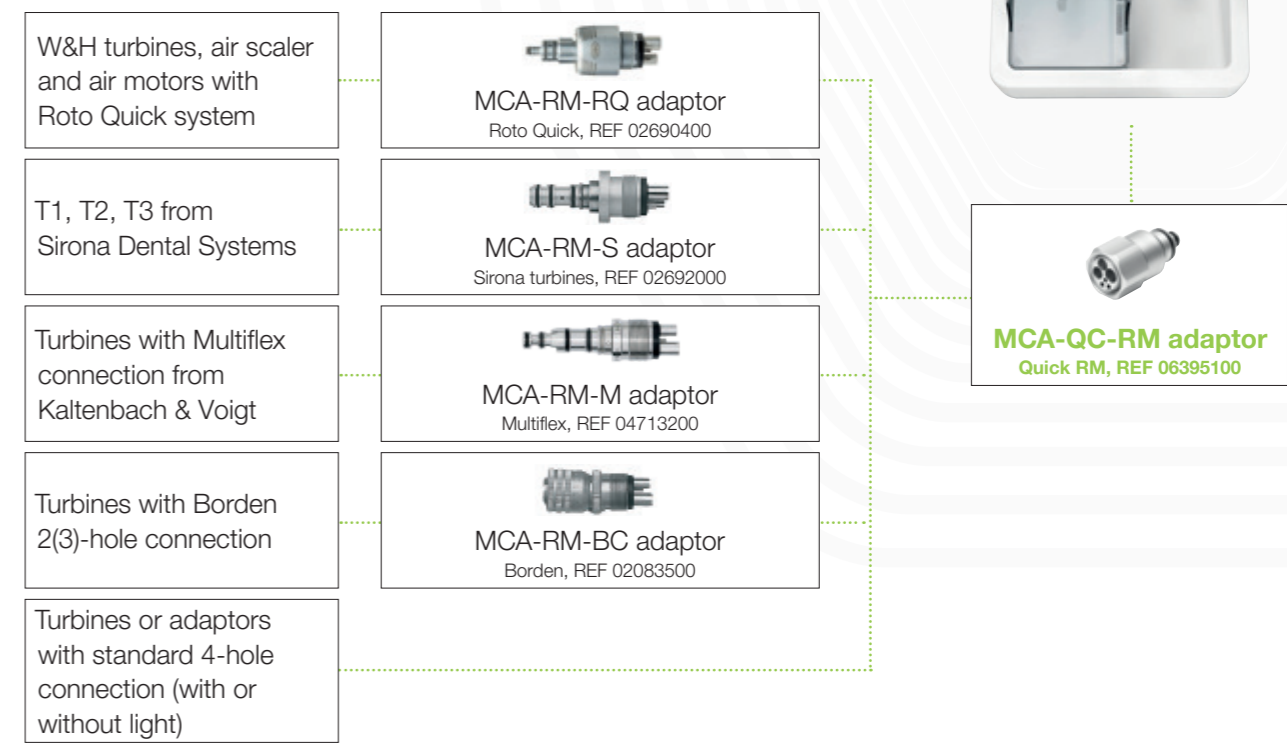
## **Assistina Twin (MB-302)**

### with Quick Connect by W&H

#### Straight and contra-angle handpieces

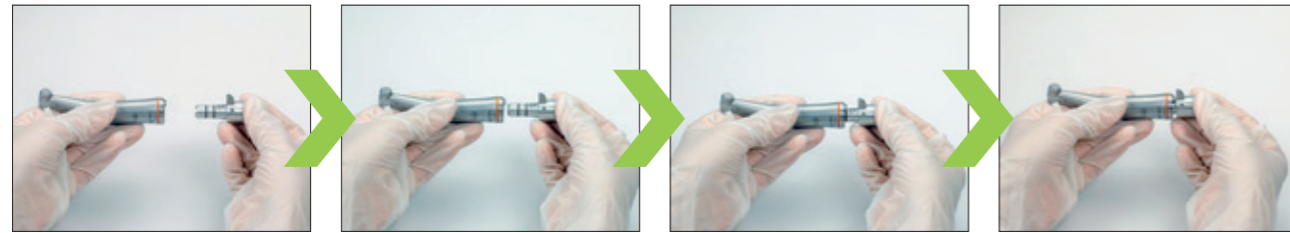


#### Turbines



# Quick ISO adaptor for straight and contra-angle handpieces

## Preparation outside and use in the Assistina Twin



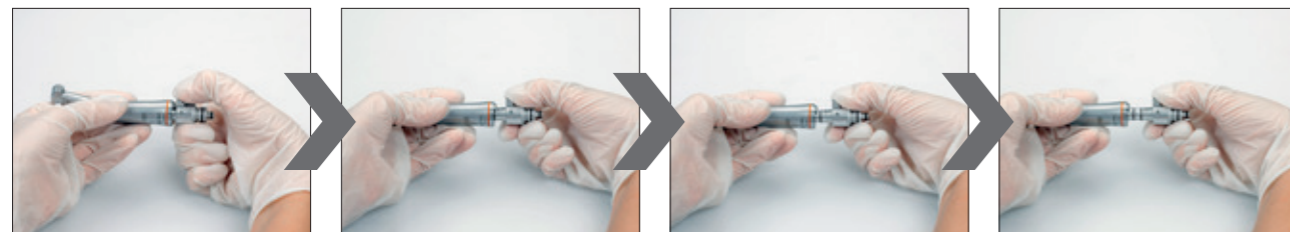
- › Assemble the straight or contra-angle handpiece on the Quick ISO adaptor



- › Assemble the adaptor connection of the straight or contra-angle handpiece on the maintenance attachment in the Assistina Twin



- › Remove the adaptor connection of the straight or contra-angle handpiece from the maintenance attachment of the Assistina Twin



- › Remove the straight or contra-angle handpiece from the Quick ISO adaptor

## Preparation and use in the Assistina Twin



- › Assemble the Quick ISO adaptor on the maintenance attachment in the Assistina Twin



- › Assemble the straight or contra-angle handpiece on the Quick ISO adaptor



- › Remove the straight or contra-angle handpiece from the Quick ISO adaptor



- › Remove the Quick ISO adaptor from the maintenance attachment of the Assistina Twin

Before  
the maintenance process

Before  
the maintenance process

After  
the maintenance process

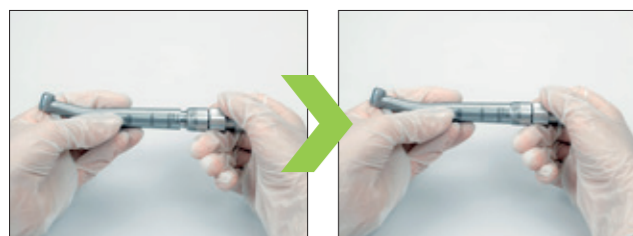
After  
the maintenance process

# Quick RM adaptor for turbine handpieces

Preparation outside and use in the Assistina Twin



- › Screw the Quick RM adaptor to the W&H Roto Quick adaptor



- › Assemble the turbine handpiece on the W&H Roto Quick adaptor



- › Assemble the adaptor connection of the turbine handpiece on the maintenance attachment in the Assistina Twin

After  
the maintenance process



- › Remove the adaptor connection of the turbine handpiece from the maintenance attachment of the Assistina Twin



- › Remove the turbine handpiece from the W&H Roto Quick adaptor

The simple assembly and removal of the respective adaptor connection enables a **fast and efficient work** – before, during and after the maintenance process.

## Preparation and use in the Assistina Twin



- › Screw the Quick RM adaptor to the W&H Roto Quick adaptor



- › Assemble the adaptor connection on the maintenance attachment in the Assistina Twin



- › Assemble the turbine handpiece on the W&H Roto Quick adaptor

After  
the maintenance process



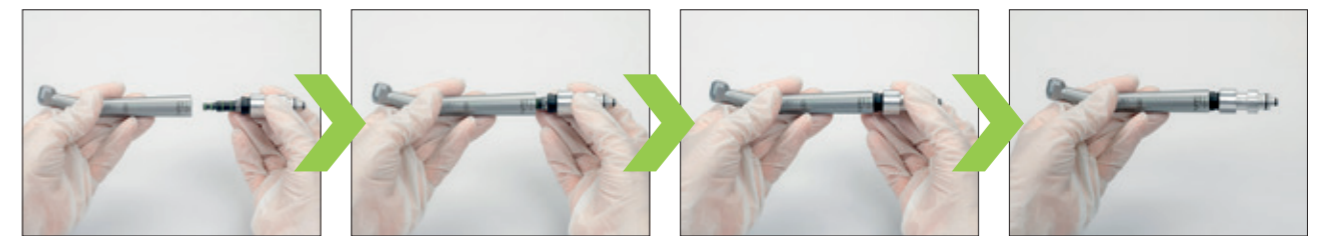
- › Remove the turbine handpiece from the W&H Roto Quick adaptor



- › Remove the adaptor connection from the maintenance attachment of the Assistina Twin

## Quick RM adaptor for turbine handpieces with different connections

- › Screw the Quick RM adaptor with a Multiflex adaptor for example



- › Assemble the turbine handpiece on the Multiflex adaptor

- › Assemble the adaptor connection of the turbine handpiece onto the maintenance attachment in the Assistina Twin, start the maintenance process and after completion remove the adaptor connection of the turbine handpiece

# Quick RM adaptor for turbine handpieces with fix connection

Preparation outside and use in the Assistina Twin

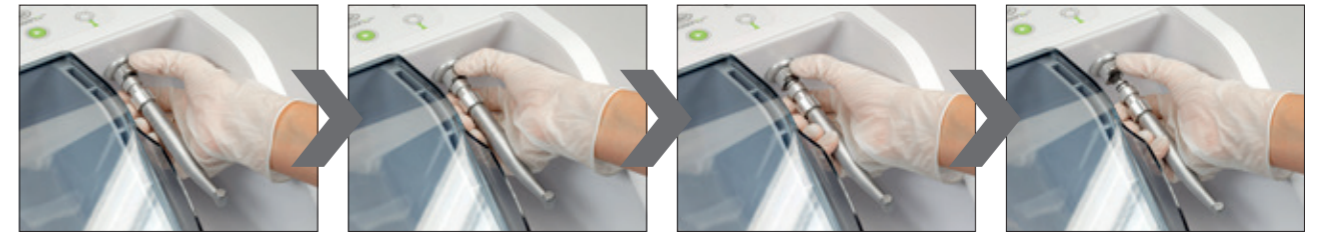


- › Screw the Quick RM adaptor to the turbine handpiece with fix connection

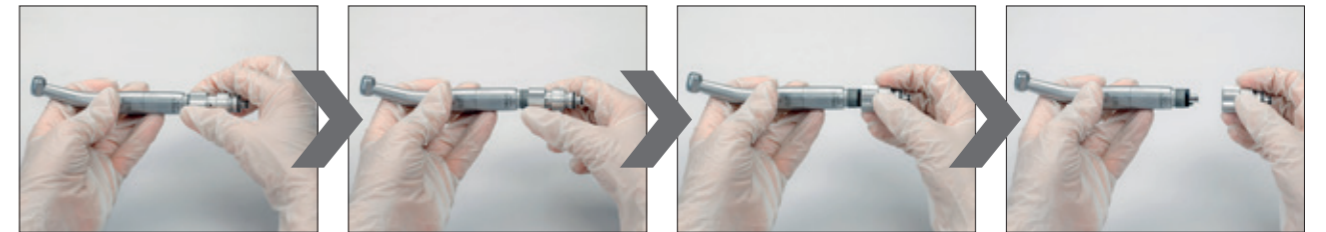


- › Assemble the adaptor connection of the turbine handpiece with fix connection on the maintenance attachment in the Assistina Twin

After  
the maintenance process



- › Remove the adaptor connection of the turbine handpiece with fix connection from the maintenance attachment of the Assistina Twin



- › Unscrew the turbine handpiece with fix connection from the Quick RM adaptor



quick  
connect  
by W&H



**Manufacturer:**

**W&H Dentalwerk Bürmoos GmbH**

Ignaz-Glaser-Straße 53, Postfach 1

5111 Bürmoos, **Austria**

**t** +43 6274 6236-0

**f** +43 6274 6236-55

office@wh.com

**wh.com**

Pictures are for illustrative purposes only. Additional equipment and accessories shown are not included as standard.

20544 AEN Rev. 003 / 25.03.2026  
Subject to alterations