

#whdentalwerk



video.wh.com

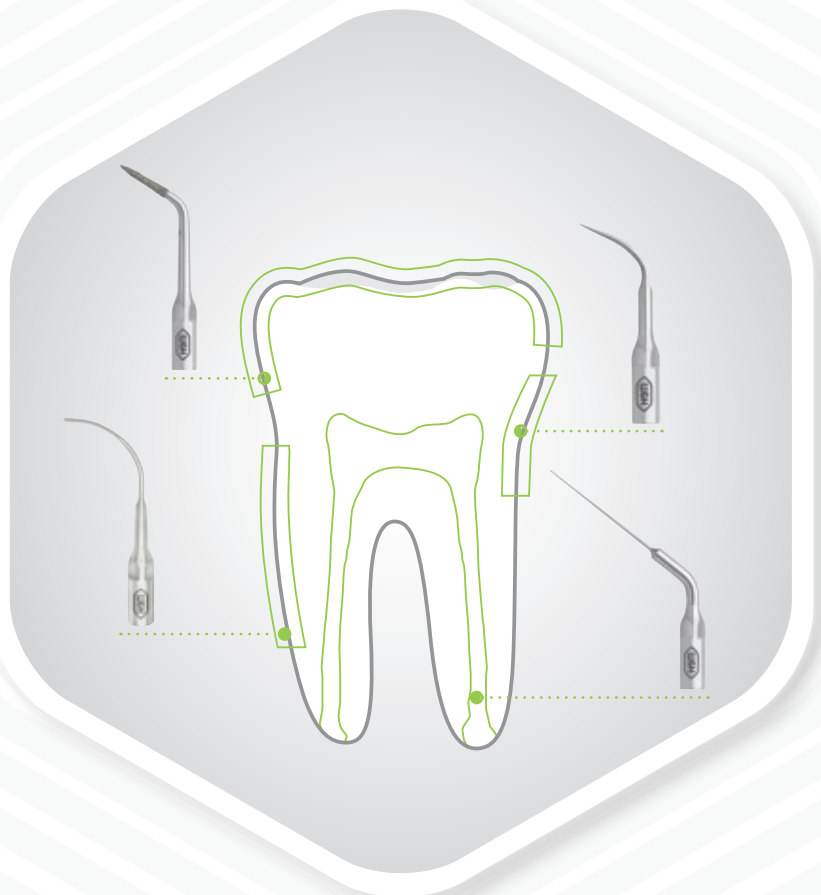
Now at
your dealer
or **wh.com**



Piezo tip system.

Durable. Safe. Effective.

By professionals for
professionals.



W&H Piezo tip system

The W&H tip system has been developed in consultation with end users and specially designed for the technical requirements of W&H piezo technology. It is perfect for the requirements of the respective application areas and the individual treatment steps.



Hygiene and Maintenance

All tips and the tip changer are thermo washer disinfectable and sterilizable.



Fast, simple and safe handling

The W&H tip changer allows fast and safe handling. The integrated torque control prevents overtightening and leads to a safe and simple tip change.



Piezo Scaler tip card

Even W&H tips are subject to material wear. Compare the tip length with the help of the red line on the tip card to ensure timely replacement.

It's all about safety



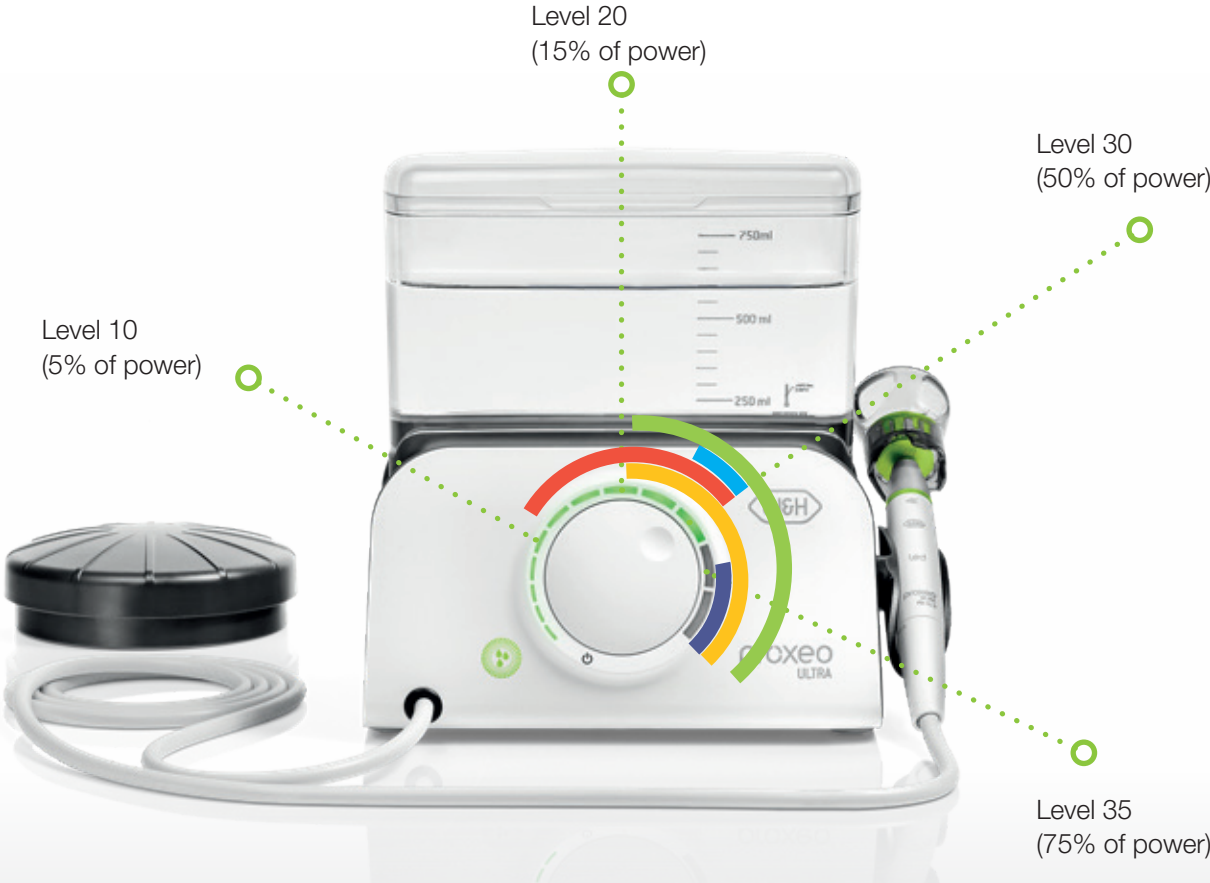
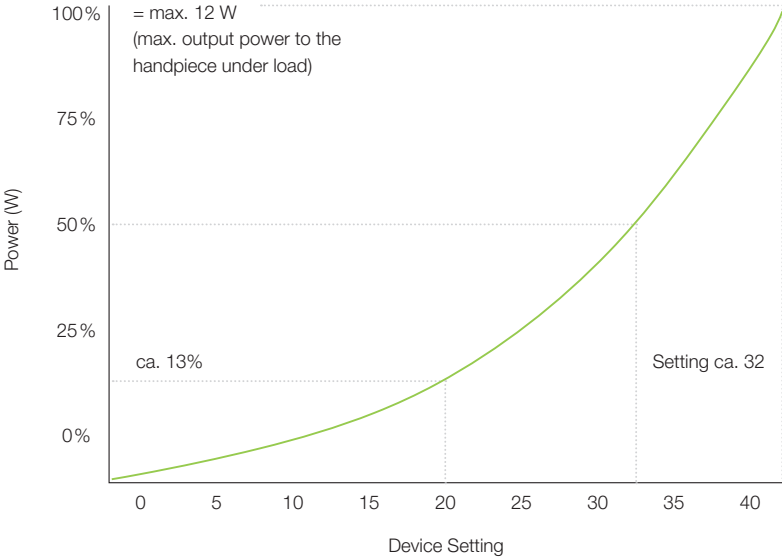
Only use tips that have been approved by W&H and the associated tip changers or spanners:

- › With periodontal tips, the medical device is suitable for the removal of concretions in the subgingival region, but not for applications which demand sterile conditions. Choose the lower performance range when carrying out periodontal treatments on hypersensitive patients in order to guarantee optimum pain-free treatment.
- › Ensure that the original shape of the tips is not affected (e.g. by being dropped).
- › The tips must not be bent back into shape or resharpened.
- › Locate and secure the tip only with the medical device switched off.
- › Never touch the tips when vibrating.
- › Insert the tip changer onto the inserted tip of the stationary medical device after every treatment (protection against injury and infection, tip protection). Tips that are changed using a spanner must be removed from the medical device immediately after treatment.
- › Do not touch into the tip changer after the treatment (with tip inserted).
- › Check for the effect of wear on the tips using the accompanying tip card.
- › Change tips if there are visible signs of wear.



Power curve and working angle

50% device setting ≠ 50% Power
 For a more precise power adjustment in the lower-power range. Take care of the recommended power settings of the tips to achieve the best possible results.



Scaling

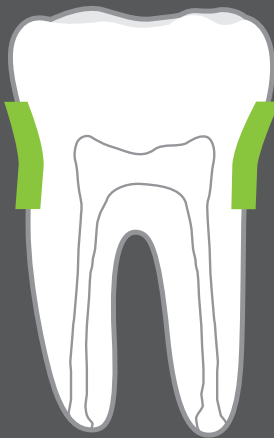
Periodontology

Restoration

Endodontic

Scaling Universal tips

Simple, gentle and efficient supragingival calculus removal in all quadrants.



1U
1US

For coarse depuration of supragingival calculus.



Power:
ideal 30 (40%)
max. 40 (100%)

Water:
ideal 60%–100%

2U
2US

For fine depuration of supragingival calculus, as well as for the treatment of recall patients.



Power:
ideal 20 (13%)
max. 30 (40%)

Water:
ideal 60%–100%

3U
3US

For polishing to remove supragingival calculus, particularly suitable for interdental cleaning.



Power:
ideal 20 (13%)
max. 30 (40%)

Water:
ideal 60%–100%

4U

For coarse depuration of supragingival calculus, in particular for the removal of large areas of calculus.



Power:
ideal 30 (40%)
max. 40 (100%)

Water:
ideal 60%–100%

Paro Periodontology tips

For supportive periodontitis treatment (SPT), recall and biofilm management.
Its slender design facilitates optimum and also atraumatic access to the periodontal pockets.



1P
1PS

Removal of subgingival deposits, particularly suitable for deep periodontal pockets.



Power:
ideal 10 (4%)
max. 30 (40%)

Water:
ideal 60%–100%

3Pr*

Right angled perio tip.
Recommended for maintenance of moderate and deep pockets and furcations.



Power:
ideal 10 (4%)
max. 30 (40%)

Water:
ideal 60%–100%

3PI*

Left angled perio tip.
Recommended for maintenance of moderate and deep pockets and furcations.

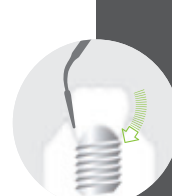


Power:
ideal 10 (4%)
max. 30 (40%)

Water:
ideal 60%–100%

1I

Tip for the efficient and careful cleaning of implants and the attendant restorations.



Power:
ideal 25 (25%)
max. 30 (40%)

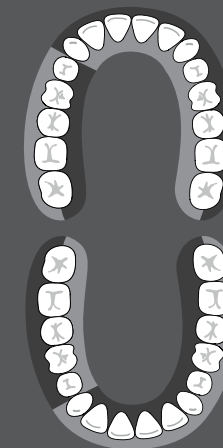
Water:
ideal 60% (100%)

Paro Periodontology tips

For initial periodontitis treatment and removal of concretions.
Diamond-coated tips for thorough cleaning of the root surface during the initial treatment of periodontitis affected patients.

*Working quadrants

3Pr 3PI
5Pr 5PI



4P
4PS

Diamonded tip for efficient cleaning of the root surface.



Power:
ideal 25 (25%)
max. 30 (40%)

Water:
ideal 60%–100%

5Pr*

Right angled tip with diamond coating for efficient cleaning of the root surface.



Power:
ideal 25 (25%)
max. 30 (40%)

Water:
ideal 60%–100%

5PI*

Left angled tip with diamond coating for efficient cleaning of the root surface.

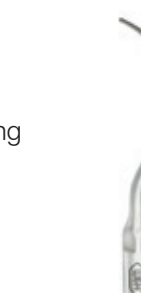


Power:
ideal 25 (25%)
max. 30 (40%)

Water:
ideal 60%–100%

5P

Diamonded tip for efficient cleaning of furcations and concavities.



Power:
ideal 25 (25%)
max. 30 (40%)

Water:
ideal 60%–100%

Restoration

Restoration tips

The tips are the perfect addition to your straight and contra-angle handpieces. Due to the diamond coating a high abrasion performance is achieved.



1R

Expanding of fissures.

2R

Diamond tip. Preparation of the veneers for clearly defined edges of preparation with maximum protection of the adjacent tooth.

3Rd

Partly diamond coated tip. For the preparation of the distal surface.

3Rm

Partly diamond coated tip. For the preparation of the mesial surface.

Power:

ideal 35 (75%)

max. 40 (100%)

Water:

ideal 60% (100%)

Power:

ideal 35 (75%)

max. 40 (100%)

Water:

ideal 60% (100%)

Power:

ideal 35 (75%)

max. 40 (100%)

Water:

ideal 60% (100%)

Power:

ideal 35 (75%)

max. 40 (100%)

Water:

ideal 60% (100%)

Endo

Endodontic tips

W&H offers the perfect range of endo tips whether for flushing a root canal or complex revision in an endodontic treatment.



1E
1ES

Non cutting instrument for the irrigation at the end of the root canal preparation.

2E

Tip for the lateral condensation due to thermal effect.

3E

Removing of broke instruments in the root canal.

4E

Preparation of the pulp chamber.

Power:

ideal 20 (15%)

max. 20 (15%)

Water:

ideal 60%–100%

Power:

ideal 35 (75%)

max. 35 (75%)

Water:

ideal 60%–100%

Power:

ideal 30 (40%)

max. 30 (40%)

Water:

ideal 60%–100%

Power:

ideal 25 (25%)

max. 30 (40%)

Water:

ideal 60%–100%

Endo Endodontic tips

5E

Vibrating and removal of root canal posts.



6E

Removal of root canal fillings and root canal calcifications.



Power:
ideal 40 (100%)
max. 40 (100%)

Water:
ideal 60%–100%

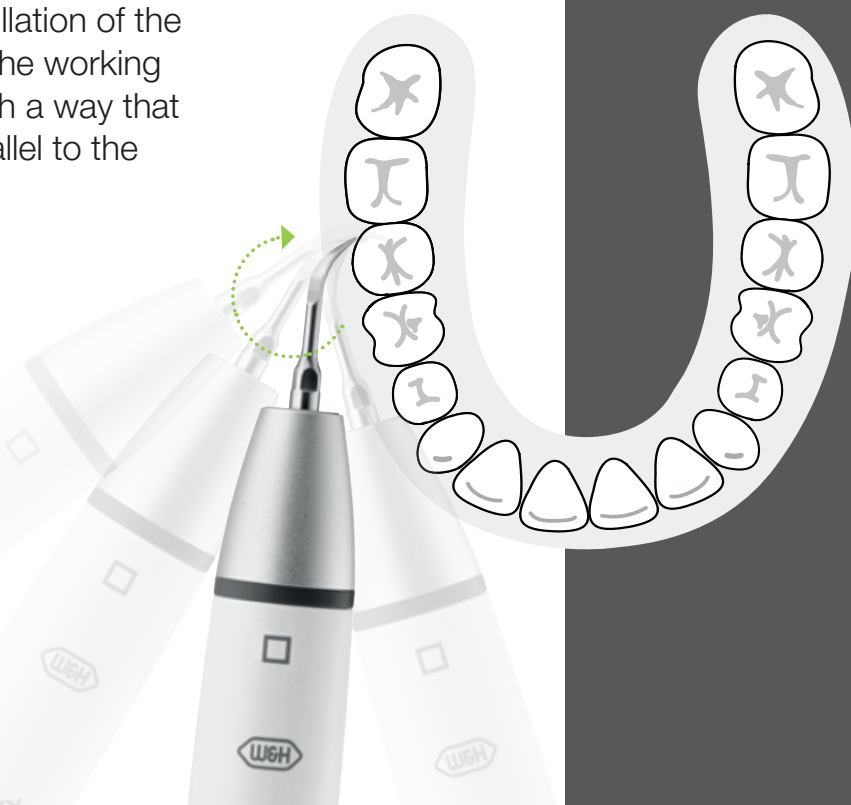


Power:
ideal 30 (50%)
max. 40 (100%)

Water:
ideal 60%–100%

Proper working angle for the Proxeo Ultra handpieces

Due to the linear oscillation of the tip (back and forth), the working angle must be in such a way that the tip is aligned parallel to the tooth surface.

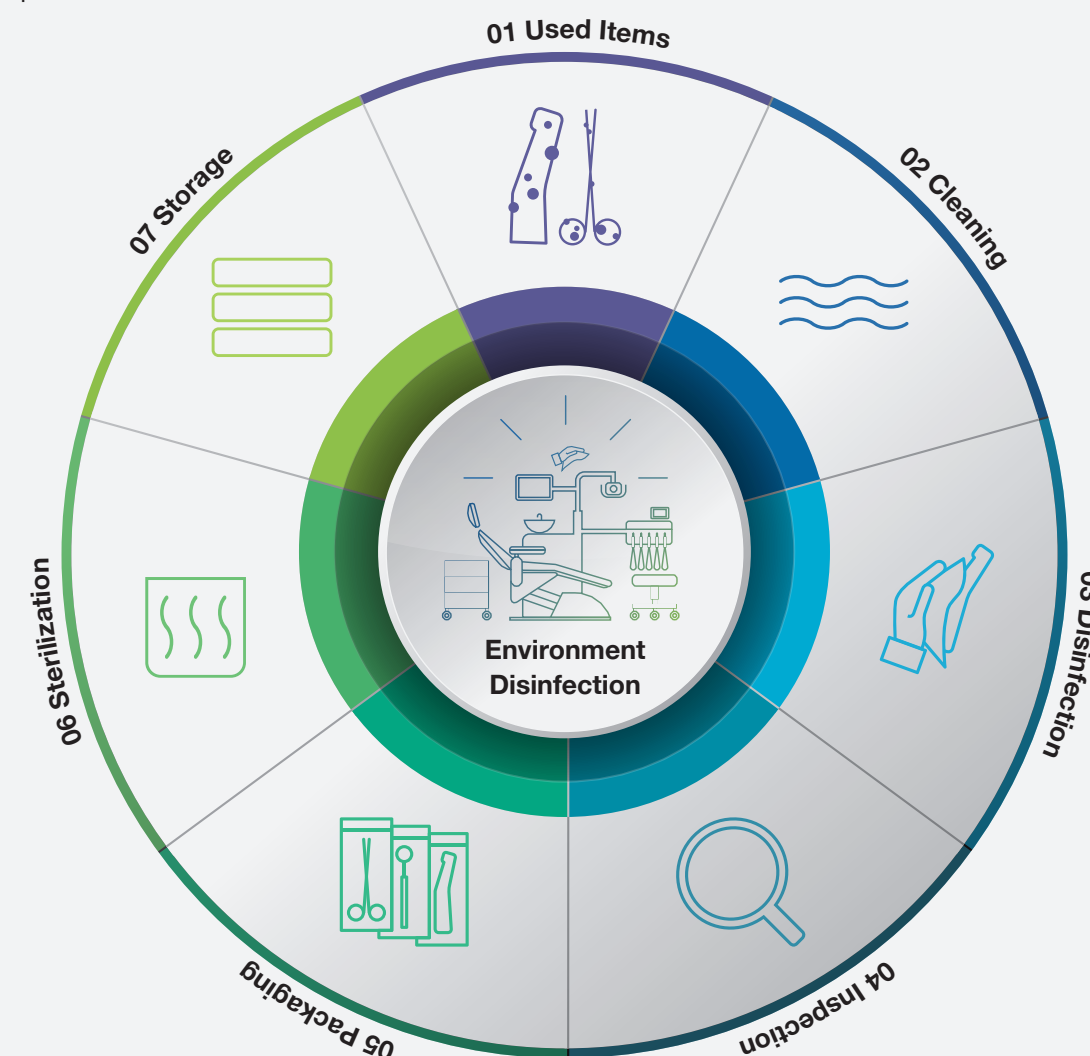


W&H AIMS Safety first!

aims Advanced
Infection Prevention
Management Solutions

Hygiene is extremely important in the dental practice. W&H AIMS is here to help: with a wide product portfolio, fundamental knowledge and all relevant information at a glance.

For your safety and the safety of your patients. **aims.wh.com**



Decontamination



Cleaning



Disinfection



Inspection &
Maintenance



Packaging



Sterilization



Traceability & Storage

Compatibility of tips with W&H handpieces

	W&H/EMS/Mectron		W&H/NSK/Satelec*	
	PB-5 L	PB-3	PB-5 L S	PB-3 S
Proxeo Ultra	X		X	
Built-in	X	X	X	X

* W&H tips with Satelec thread (e.g. 1US, 2US) are compatible with the W&H handpieces PB-5 L S, PB-3 LED S and PB-3 S.

** Note: EMS®, Mectron®, NSK® and Satelec® are trademarks of third parties not affiliated with W&H Dentalwerk Bürmoos GmbH.
When using third-party tips, the user has to adjust the performance parameters of the W&H Piezo unit accordingly.



Manufacturer:

W&H Dentalwerk Bürmoos GmbH
 Ignaz-Glaser-Straße 53, Postfach 1
 5111 Bürmoos, **Austria**
 t +43 6274 6236-0
 f +43 6274 6236-55
 office@wh.com
 wh.com